

INSTALLATION INSTRUCTIONS

OMNI CRUISE MOUNTS WITHOUT PEGS FOR GOLD WING

6758 CHROME OR 6759 SATIN BLACK

THANK YOU FOR CHOOSING KURYAKYN!

Protect yourself and others from possible injury and property damage or loss. Pay close attention to all instructions, warnings, cautions, and notices regarding the installation, use, and care of this product.

WARNING

THIS INDICATION ALERTS YOU TO THE FACT THAT IGNORING THE CONTENTS DESCRIBED HEREIN CAN RESULT IN POTENTIAL DEATH OR SERIOUS INJURY.

CAUTION

THIS INDICATION ALERTS YOU TO THE FACT THAT IGNORING THE CONTENTS DESCRIBED HEREIN CAN RESULT IN MINOR OR MODERATE POTENTIAL INJURY.

NOTICE

THIS INDICATION ALERTS YOU TO THE FACT THAT IGNORING THE CONTENTS DESCRIBED HEREIN MAY NEGATIVELY AFFECT PRODUCT PERFORMANCE AND FUNCTIONALITY OR DAMAGE THE PRODUCT ITSELF OR THE PRODUCT TO WHICH IT IS BEING ATTACHED.

ENSURE THAT THE FOLLOWING PARTS HAVE BEEN INCLUDED IN THE KIT:

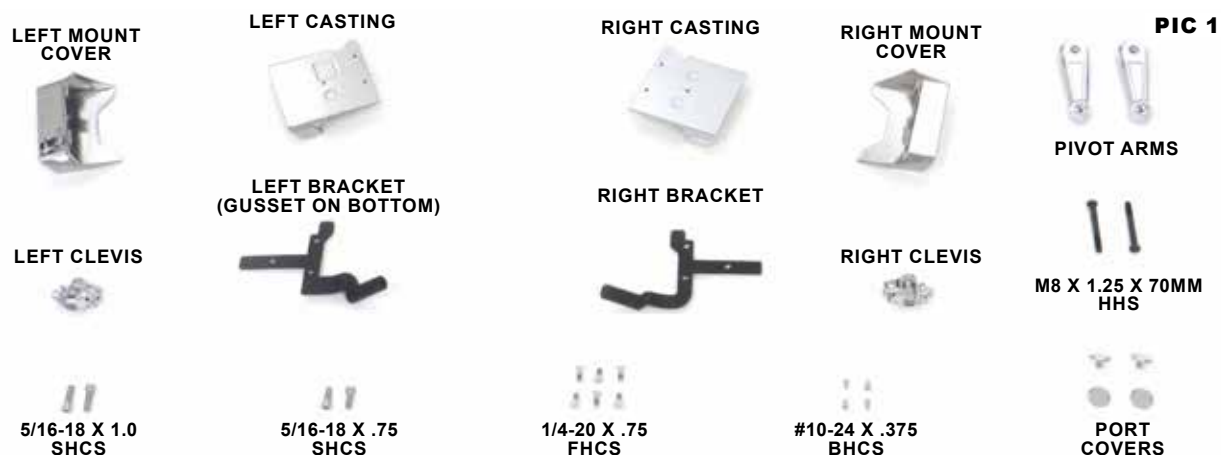
- | | |
|-----------------------------------|--|
| 1 Left Casting | 2 Pivot Arms |
| 1 Right Casting | 2 5/16-18 X .75 Socket Head Cap Screws |
| 1 Left Bracket (gusset on bottom) | 2 5/16-18 X 1 Socket Head Cap Screws |
| 1 Right Bracket (no gusset) | 4 #10-24 X .375 Button Head Cap Screws |
| 1 Left Clevis | 6 1/4-20 X .75 Flat Head Cap Screws |
| 1 Right Clevis | 2 M8 X 1.25 X 70MM Hex Head Screw |
| 1 Left Mount Cover | 4 Port Covers |
| 1 Right Mount Cover | |

YOU WILL ALSO NEED:

Metric and standard hex bit set, Torx bit set, ratchet, ft-lbs (Nm) torque wrench, blue Loctite

NOTICE

THESE INSTALLATION INSTRUCTIONS CONTAIN IMPORTANT INFORMATION. ENSURE THE END USER RECEIVES THIS COPY AND IS AWARE OF ITS IMPORTANCE FOR FUTURE USE.



WARNING

A FACTORY SERVICE MANUAL WILL BE HELPFUL IN PERFORMING THIS INSTALLATION. DO NOT ATTEMPT TO PERFORM THIS INSTALLATION IF YOU ARE NOT CONFIDENT IN YOUR ABILITY TO COMPLETE ALL OF THE STEPS IN THE PROCEDURE; CONSULT A TRAINED TECHNICIAN. IMPROPER INSTALLATION COULD RESULT IN SERIOUS INJURY OR DEATH.

KURYAKYN.COM

INSTALLATION INSTRUCTIONS

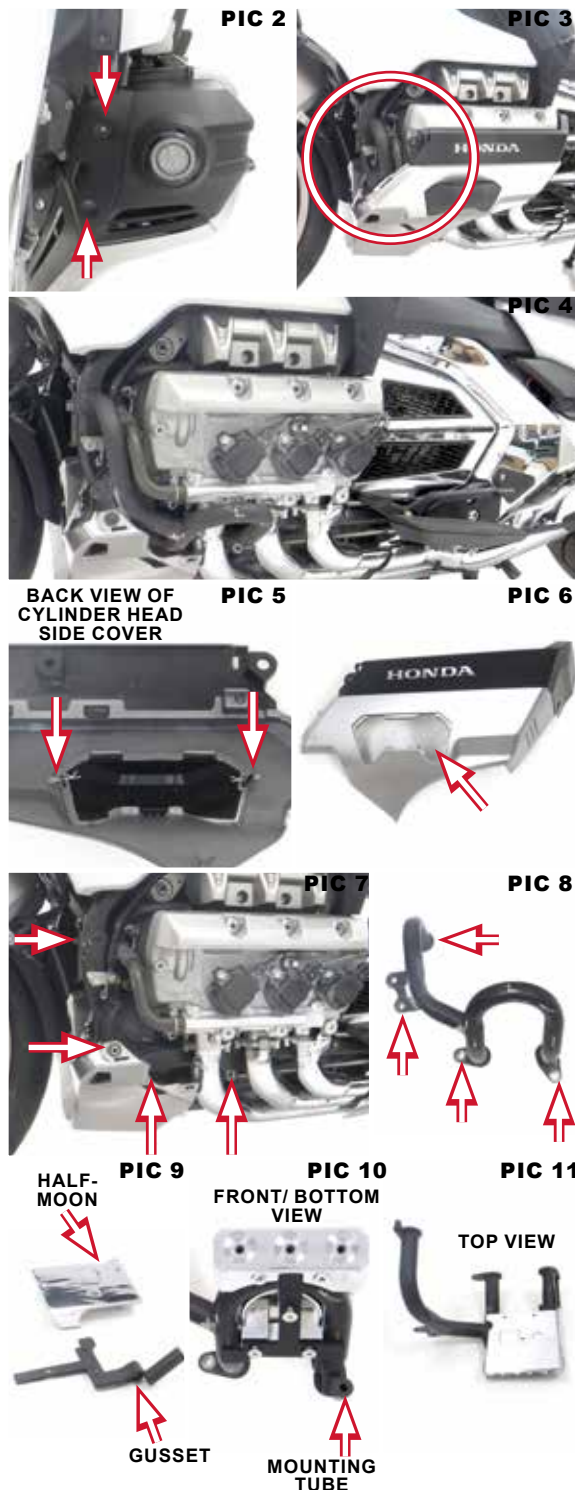
OMNI CRUISE MOUNTS WITHOUT PEGS FOR GOLD WING

-CONTINUED-

NOTICE

PAY CLOSE ATTENTION TO PARTS AND HARDWARE BEING REMOVED THROUGHOUT THESE INSTRUCTIONS. KNOWING WHERE PARTS AND HARDWARE WERE REMOVED FROM WILL COME IN HANDY WHEN YOU REINSTALL THEM LATER.

- STEP 1** Read and understand all steps in the instructions before starting the installation. Park the motorcycle on a hard, level surface and turn off the ignition. Let motorcycle cool.
- STEP 2** Start on the left (clutch) side. Work on one side at a time.
- STEP 3** Refer to PIC 2 and 3. Remove the fog light cover by unfastening the two (2) mounting screws from the front of the cover. Apply a small amount of blue Loctite to the threads of the hardware removed. Set the cover and mounting hardware aside, they will be reused.
- STEP 4** Refer to PIC 4. Remove Cylinder Head Side Cover by unfastening two (2) mounting screws, one on the front top corner and one on the back-side top, as well as unfastening a snap fit clip. Apply a small amount of blue Loctite to the threads of the hardware removed. Set the cover and mounting hardware aside, they will be reused.
- STEP 5** Refer to PIC 5 and 6. On the backside of the cylinder head cover, remove the two (2) pin locks securing the engine guard cover to it. Remove the engine guard cover. Set the engine guard cover and lock pins aside, they will not be reused.
- STEP 6** Refer to PIC 7 and 8. Remove the engine guard by removing three (3) flange bolts directly fastened to the motorcycle and one (1) flange bolt fastened to the front lower cowl. Apply a small amount of blue Loctite to the threads of the hardware removed. Set mounting hardware aside, most of them will be reused.
- STEP 7** Refer to PIC 9. Locate provided Left Casting, Left Bracket, and three (3) Flat Head Cap Screws. The Left Bracket has a gusset on the bottom side of it. The Left Casting, from the top view, has a half-moon cut out, which will face towards the front of the bike when assembled on the engine guard.
- STEP 8** Refer to PIC 10 and 11. Align the casting over the top of the "U" part of the engine guard, and align the bracket under the engine guard. Align the mounting holes of the casting and bracket. Be sure the extended mounting tube on the bracket aligns with the bottom right mounting hole of the engine guard. Loosely fasten the casting and bracket together using the three (3) flat head cap screws. Do not fully tighten hardware yet.



KURYAKYN.COM

INSTALLATION INSTRUCTIONS

OMNI CRUISE MOUNTS WITHOUT PEGS FOR GOLD WING

-CONTINUED-

STEP 9 Refer to PIC 12. Locate provided one (1) M8 X 1.25 X 70MM Hex Head Screw. Align the lower right corner of the engine guard assembly with the motorcycle. Insert the screw through the mounting tube of the provided bracket and the engine guard, and fasten them to the motorcycle.

STEP 10 Refer to PIC 13. Locate engine guard hardware that was removed in Step 6. Align and fasten the mounting holes of the engine guard assembly to the motorcycle and the front lower cowl using the OEM hardware. Be aware that one of the OEM flange bolts will not be reused, as it was replaced by the provided Hex Head Screw in Step 9.

STEP 11 Tighten all flat head screws located on the bottom of the bracket that is fastened to the casting piece.

STEP 12 Fully tighten all hardware fastening the engine guard to the motorcycle.

Torque values for engine guard mounting bolts:
20 ft-lbs (27 Nm)

STEP 13 Refer to PIC 14. Locate the Cylinder Head Side Cover and mounting hardware that was removed in Step 4. Align and fasten the cover to the motorcycle. Fully tighten all hardware.

STEP 14 Refer to PIC 15. Locate the Fog Light Cover and mounting hardware that was removed in Step 3. Align and fasten the cover to the motorcycle. Fully tighten all hardware.

STEP 15 Refer to PIC 16 and 17. Locate provided Left Mount Cover. Align and place it over the casting and bracket assembly and into the Cylinder Head Side Cover.

STEP 16 Refer to PIC 17. Locate provided two (2) Button Head Cap Screws. Align the mounting holes located on the bottom of the mount cover and casting. Secure it in place using the button head cap screws. Fully tighten, but do not over tighten, all hardware.

STEP 17 Refer to PIC 18 and 19. Locate provided Left Clevis (clevis bends back towards the rear of the bike and the set screw is located on the bottom side), one (1) pivot arm and one (1) 5/16-18 X .75 Socket Head Cap Screw. Apply a small amount of blue Loctite to the threads of the screw. Align the splines of the clevis and the top of the pivot arm. Secure the clevis to the pivot arm by inserting the screw from the backside of the pivot arm. Do not fully tighten the hardware yet.



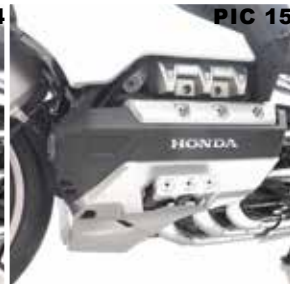
PIC 12



PIC 13



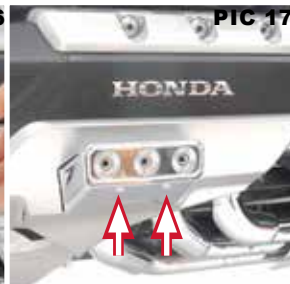
PIC 14



PIC 15



PIC 16



PIC 17



PIC 18



PIC 19

KURYAKYN.COM

866 277 9598 | INFO@KURYAKYN.COM

454 COUNTY ROAD VV SOMERSET, WI 54025



INSTALLATION INSTRUCTIONS

OMNI CRUISE MOUNTS WITHOUT PEGS FOR GOLD WING

-CONTINUED-

STEP 18 Refer to PIC 20. Locate provided one (1) 5/16-18 X 1.0 Socket Head Cap Screw. Apply a small amount of blue Loctite to the threads of the screw. Determine which mounting position to secure the pivot arm assembly to. Align the splined mounting hole at the bottom of the pivot arm with the casting and secure it in place with the provided screw.

STEP 19 Refer to PIC 21. Locate provided two (2) port covers. Insert them into the remaining open mounting holes on the casting.

STEP 20 Refer to PIC 22 and 23. Locate sold separately Kuryakyn footpeg or mini boards. Install the footpeg or floorboard to the splined adapter, located in the clevis attached to the pivot arm, per the instructions provided with them. Set footpeg or floorboard to desired position and loosely fasten it to the splined adapter in the clevis.

STEP 21 Refer to PIC 24. Locate provided Right (brake) side parts and remaining hardware. Repeat Steps 3 through 20 on the Right (brake) side.

STEP 22 Refer to PIC 25. Test the position of the pivot arms and footpegs, or mini boards, on both sides of the motorcycle. While the footpegs or mini boards are set down in the riding position, tighten the set screw located on the bottom side of the adapter to adjust the resting position of them. Once desired positions have been determined, fully tighten all hardware on the pivot arms and footpegs.

NOTICE

IT IS THE INSTALLER'S RESPONSIBILITY TO ENSURE THAT ALL OF THE FASTENERS (INCLUDING PRE-ASSEMBLED) ARE TIGHTENED BEFORE OPERATION OF THE MOTORCYCLE. KURYAKYN WILL NOT PROVIDE WARRANTY COVERAGE ON PRODUCTS OR COMPONENTS LOST DUE TO IMPROPER INSTALLATION OR LACK OF MAINTENANCE. PERIODIC INSPECTION AND MAINTENANCE ARE REQUIRED ON ALL FASTENERS.





INSTALLATION INSTRUCTIONS

OMNI CRUISE MOUNTS WITHOUT PEGS FOR GOLD WING

-CONTINUED-

LIMITED WARRANTY

Kuryakyn warrants that any Kuryakyn products sold hereunder, shall be free of defects in materials & workmanship for a period of one (1) year from the date of purchase by the consumer excepting the following provisions:

1. Kuryakyn shall have no obligation in the event the customer is unable to provide a receipt showing the date the customer purchased the product(s).
2. The product must be properly installed, maintained & operated under normal conditions.
3. Kuryakyn shall not be liable for any consequential & incidental damages, including labor & paint, resulting from failure of a Kuryakyn product, failure to deliver, delay in delivery, delivery in nonconforming condition, or for any breach of contract or duty between Kuryakyn & a customer.
4. Kuryakyn products are often intended for use in specific applications. Kuryakyn makes no warranty if a Kuryakyn product is used in applications other than intended.
5. Kuryakyn electrical products are warranted for one (1) year from the date of purchase by the consumer. L.E.D.'s contained in components of Kuryakyn products will be warranted for defects in materials & workmanship for 3 years from the date of purchase whereas all other components shall be warranted for one (1) year.
6. All warranty claims must be directed to the place of purchase. Merchandise sold through internet auction sites or any other unauthorized reseller shall not carry a Kuryakyn warranty. If unsure, please contact the place of purchase to verify they are an authorized Kuryakyn reseller.

RETURN POLICY

Merchandise determined to be defective may be returned up to one year from the date of purchase. Returns must be processed through original seller. Returned merchandise for any other reason other than warranty claims must be in like new condition & subject to a 20% restocking fee. All returns are subject to inspection for determination of full or partial credit. Any returned part that shows evidence of being used or installed contrary to manufacturer's instructions, &/or subjected to improper handling, packaging or return shipping by the customer, will not be eligible for exchange, refund or warranty consideration. All returned electrical items will be inspected & tested. If electrical item is deemed functional, no credit will be issued & item will be returned. All sales are final on discontinued or closeout merchandise.

©2015 KURYAKYN HOLDINGS, LLC ALL RIGHTS RESERVED

KURYAKYN, KURYAKYN K logo and the marks appearing on this instruction sheet are registered and common law trademarks of Kuryakyn Holdings except noted third-party trademarks. A full listing of trademarks and trademark registrations owned by Kuryakyn Holdings can be found at www.kuryakyn.com/legal-notice.

Emissions Notice: The California Air Resources Board (CARB) does not permit the use of aftermarket emission-related parts(s) that alter the performance of OEM emission-related devices unless CARB has issued an Executive Order, other than on racing vehicles on closed courses. Check your local laws and manufacturer's information.

Listed Manufacturers and product model names are for reference only. All product and company names are trademarks or registered trademarks of their respective holders. Use of them does not imply any affiliation with or endorsement by them. All specifications are subject to change without notice.

For additional information on third-party product and company names, please consult our Web page at www.kuryakyn.com/legal-notice